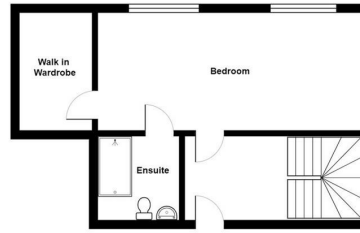




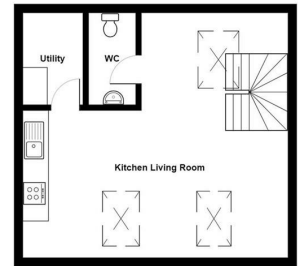
Fairview House | Ashwood Park | Ashwood Way | RG23 8DQ

£1,225 Per Calendar Month

Waterfords 
Residential Sales & Lettings



Total Area: 969 ft² ... 90.0 m²



Energy Efficiency Rating		
	Current	Potential
Very energy efficient - lower running costs		
(92 plus) A		
(81-91) B		
(69-80) C		
(55-68) D	59	59
(39-54) E		
(21-38) F		
(1-20) G		
Not energy efficient - higher running costs		
England & Wales	EU Directive 2002/91/EC	



Description

Nestled in the charming area of Basingstoke, this modern one-bedroom apartment offers a delightful living experience. The property features a well-appointed reception room that provides a welcoming space for relaxation and entertainment. The bedroom is designed to be both comfortable and functional, making it an ideal retreat after a long day.

Key features

- One Bedroom Apartment
- Water & electric separately metered
- Intergrated fridge freezer, dishwasher, ceramic hob & electric oven
- Minimum let 12 months
- Council Tax band - C
- Combination blinds partial or full black-out
- Lightning fast Fibre Broadband plus TV, telephone & Sky Q points.
- LED mirror with shaver socket & demister function
- Onsite parking included in the rent
- Available April 2025



39 The Hart Centre
Fleet
Hampshire
GU51 3LA
01252 623330

hampshirelettings@waterfords.co.uk
<https://www.waterfords.co.uk/>